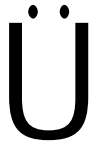


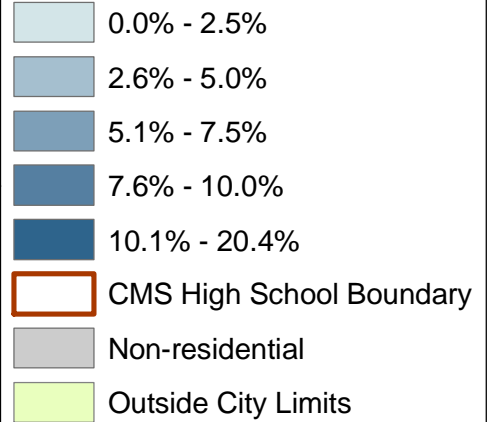
Dropout Rate

City of Charlotte Neighborhood Quality of Life NSAs

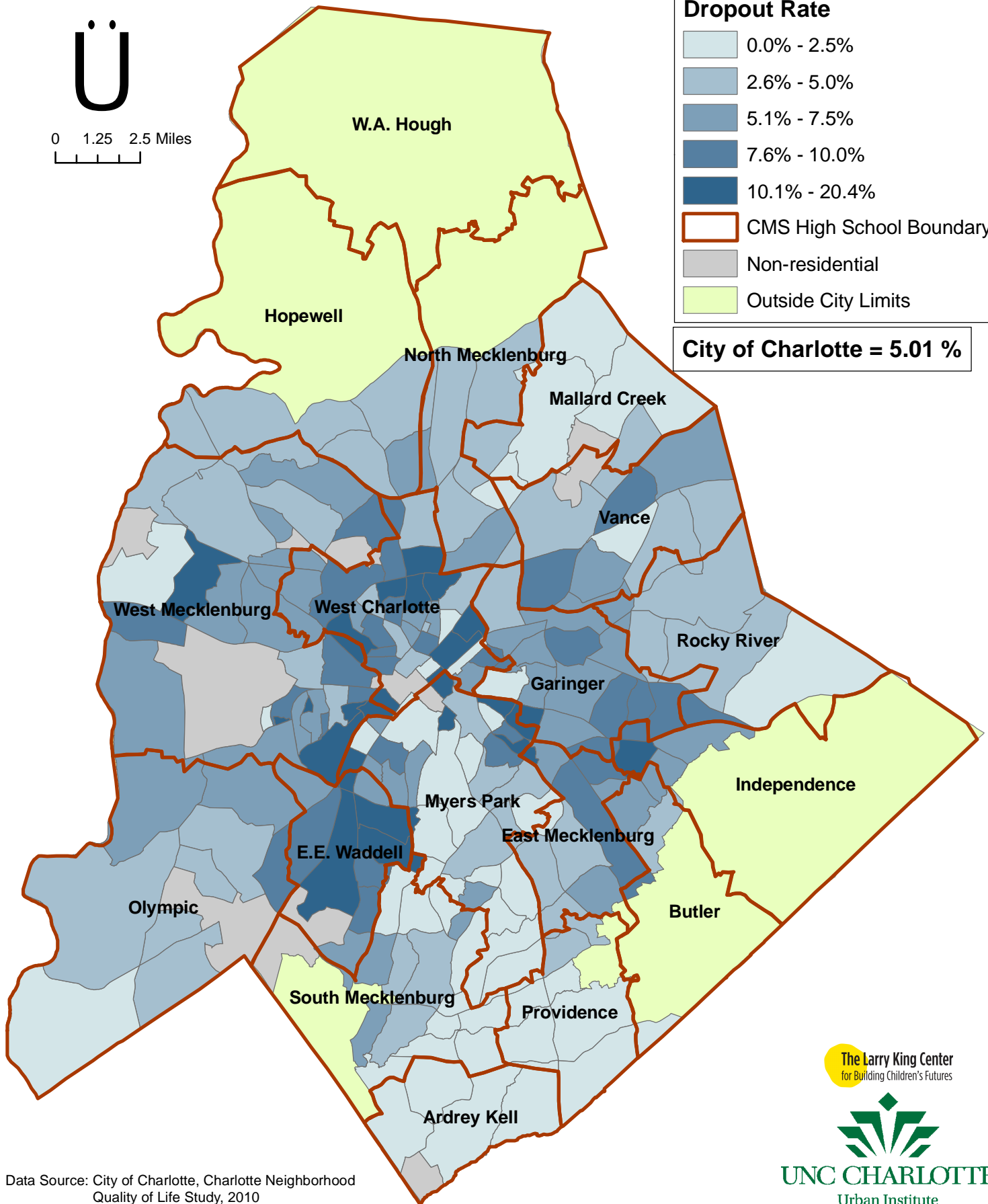


0 1.25 2.5 Miles

Dropout Rate



City of Charlotte = 5.01 %



Data Source: City of Charlotte, Charlotte Neighborhood Quality of Life Study, 2010

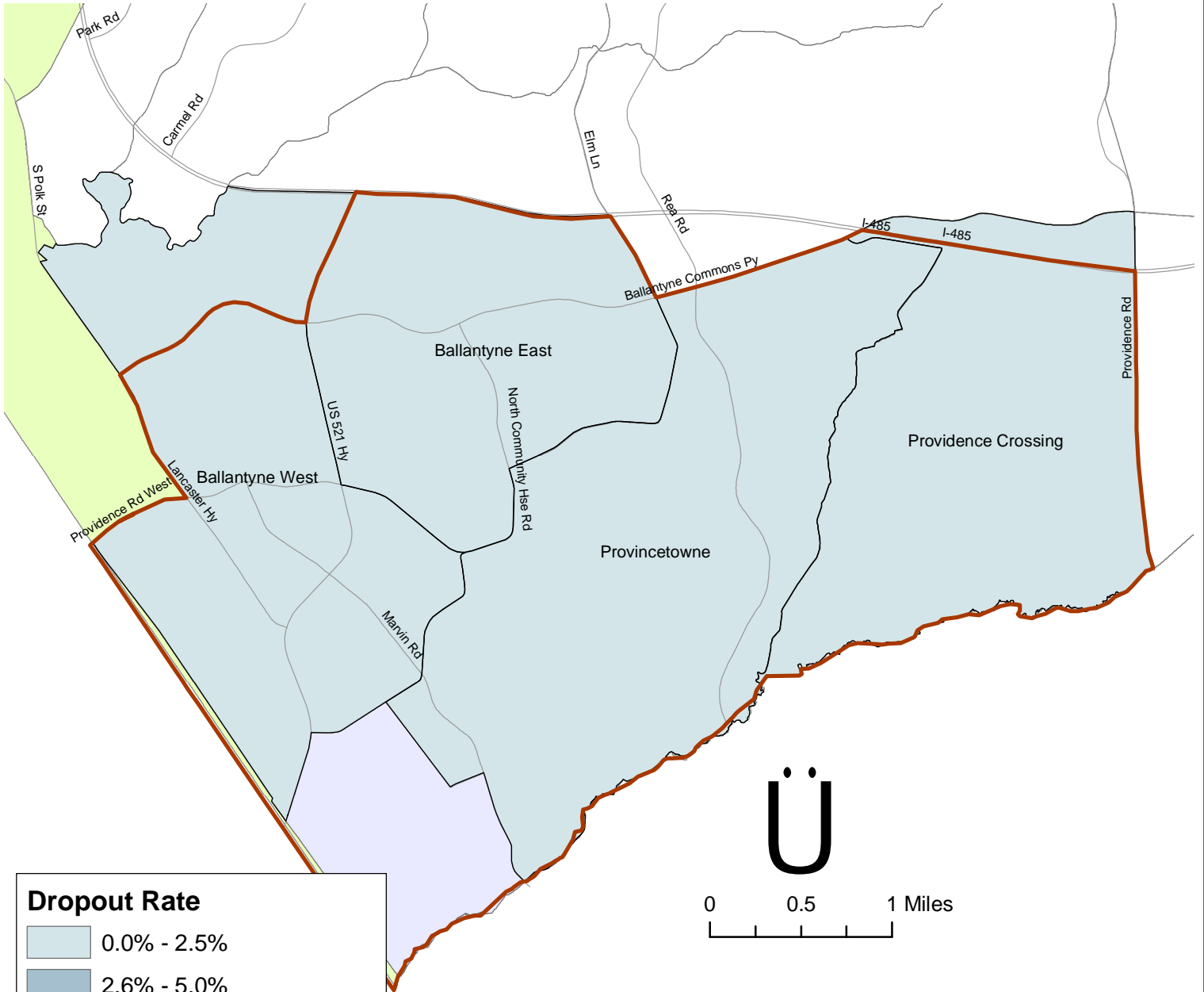
The Larry King Center
for Building Children's Futures



UNC CHARLOTTE
Urban Institute

Dropout Rate

Ardrey Kell High School NSAs

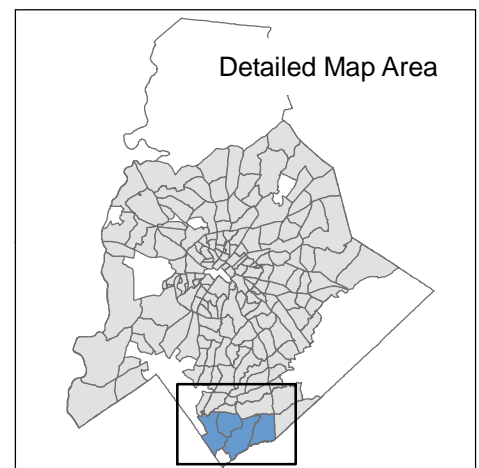


Dropout Rate

- 0.0% - 2.5%
- 2.6% - 5.0%
- 5.1% - 7.5%
- 7.6% - 10.0%
- 10.1% - 20.4%
- Ardrey Kell High Boundary
- Non-residential
- Outside City Limits
- Roads

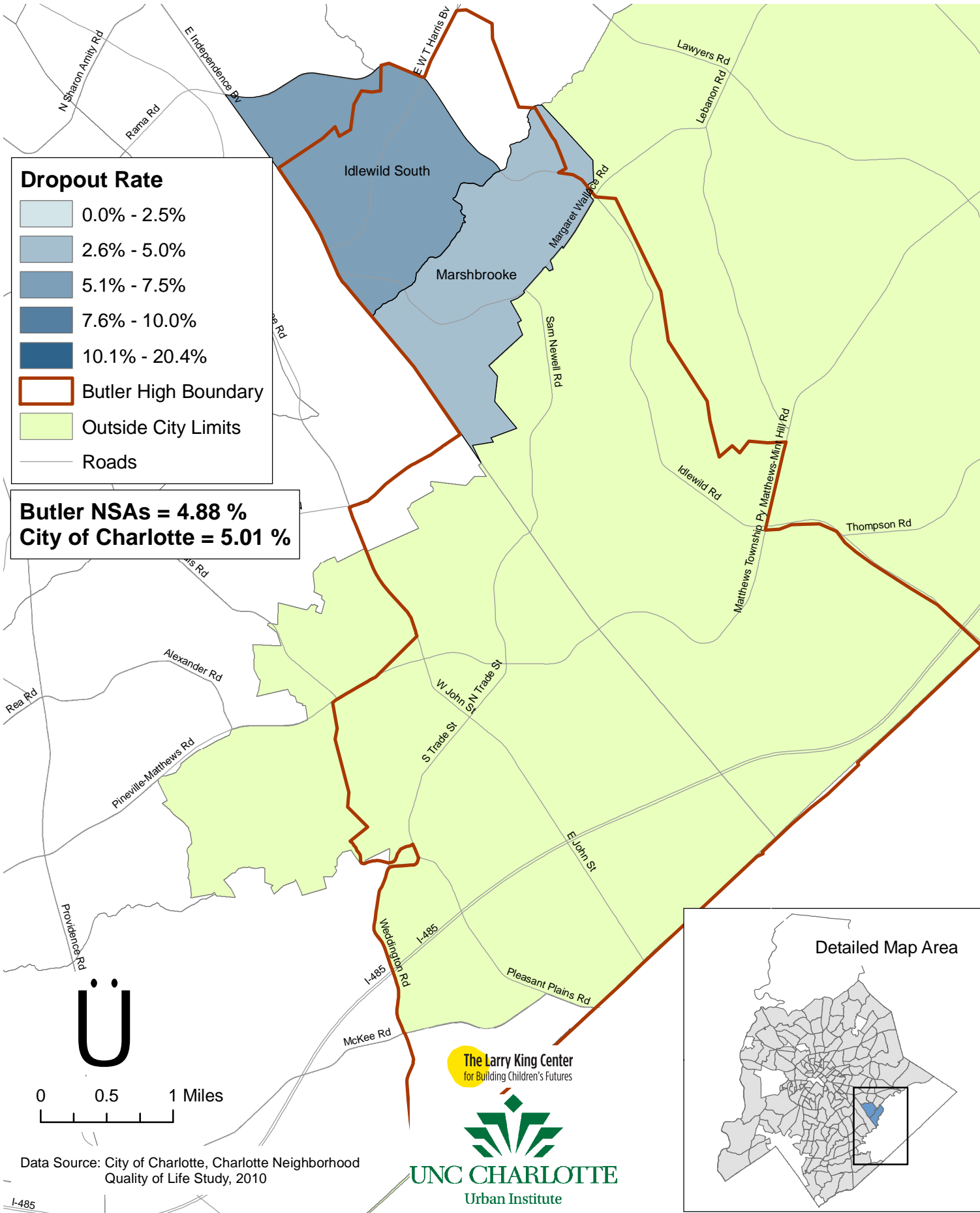
Ardrey Kell NSAs = 1.25 %
City of Charlotte = 5.01 %

Data Source: City of Charlotte, Charlotte Neighborhood Quality of Life Study, 2010



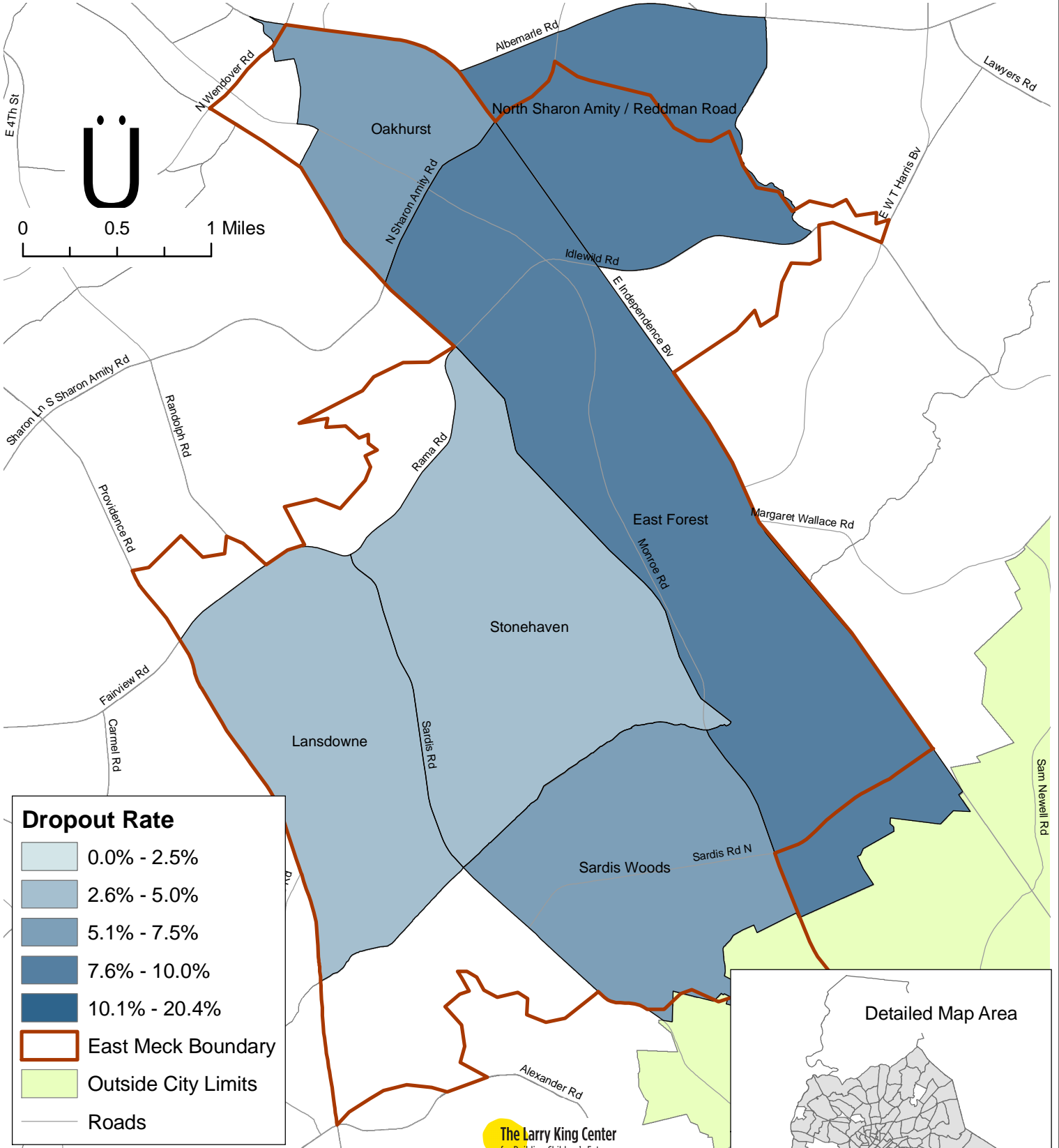
Dropout Rate

Butler High School NSAs



Dropout Rate

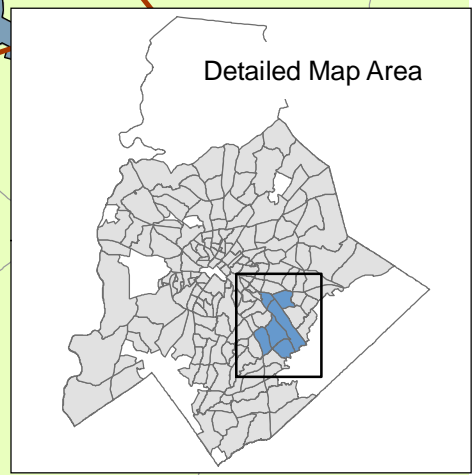
East Mecklenburg High School NSAs



East Mecklenburg NSAs = 7.30 %
City of Charlotte = 5.01 %

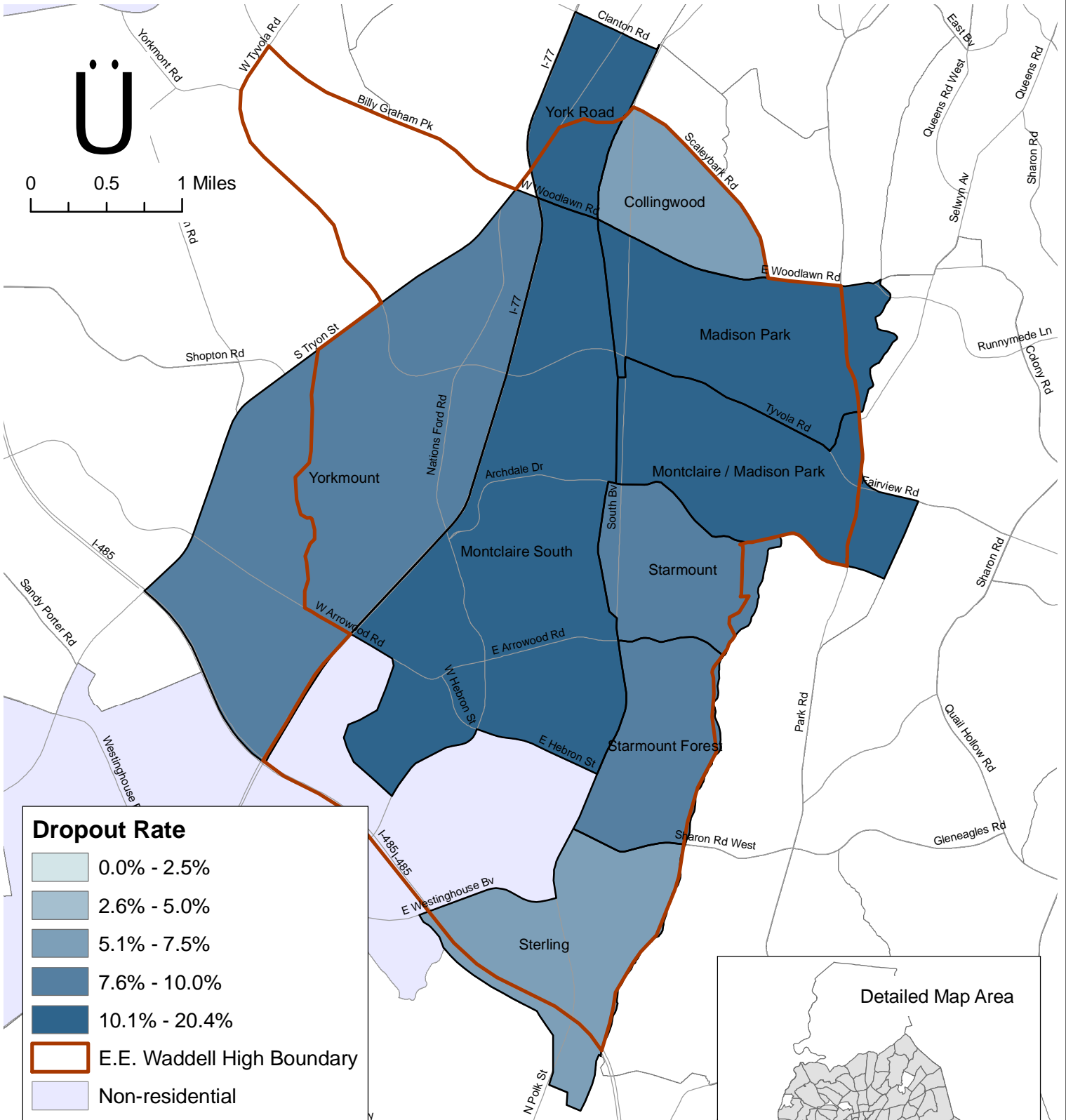
Data Source: City of Charlotte, Charlotte Neighborhood Quality of Life Study, 2010

The Larry King Center
for Building Children's Futures



Dropout Rate

E.E. Waddell High School NSAs



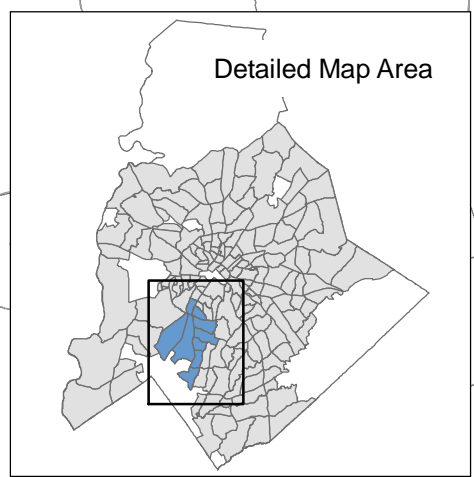
Dropout Rate

- 0.0% - 2.5%
- 2.6% - 5.0%
- 5.1% - 7.5%
- 7.6% - 10.0%
- 10.1% - 20.4%
- E.E. Waddell High Boundary
- Non-residential
- Roads

E.E. Waddell NSAs = 8.98 %
City of Charlotte = 5.01 %

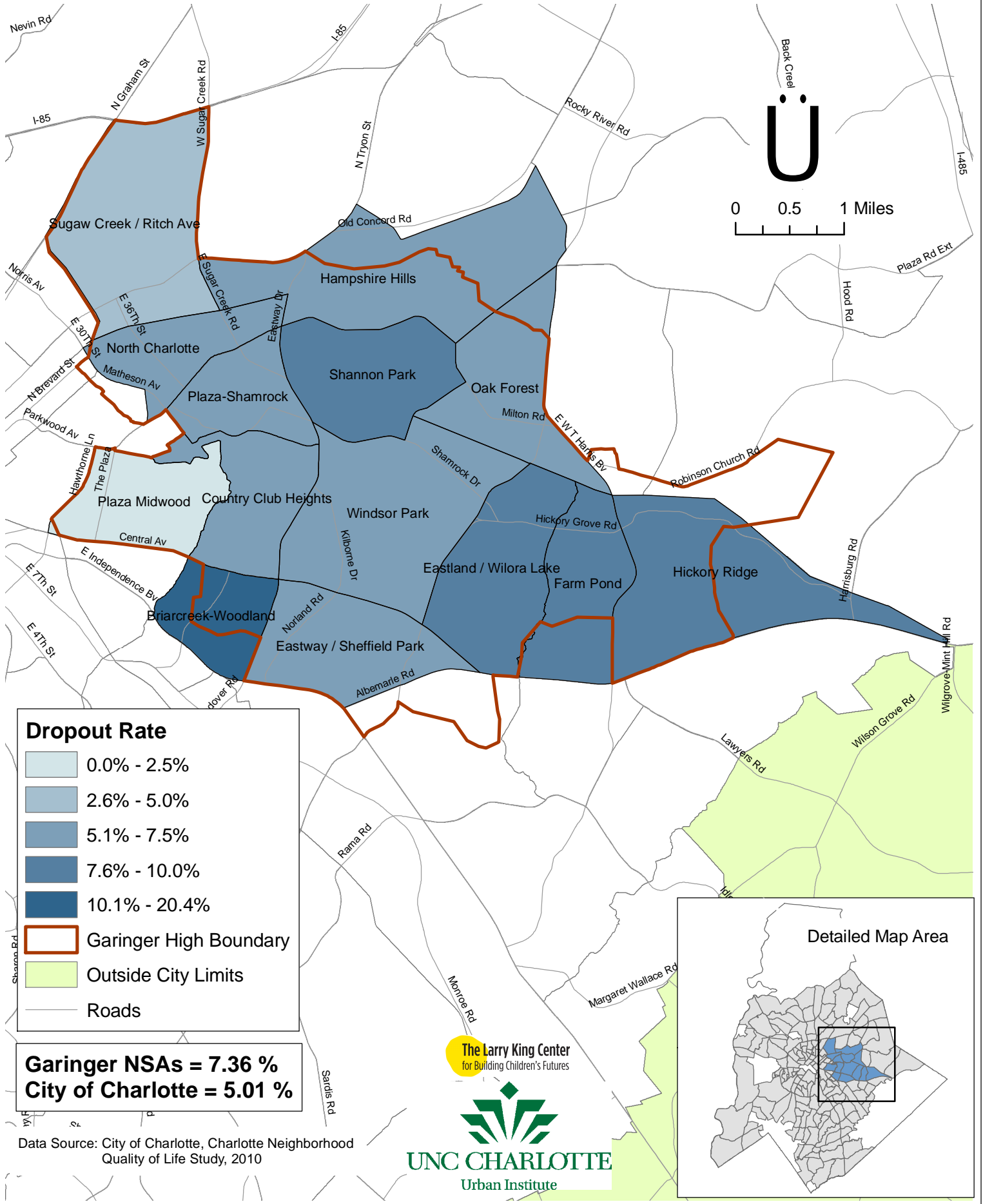
Data Source: City of Charlotte, Charlotte Neighborhood Quality of Life Study, 2010

The Larry King Center
for Building Children's Futures



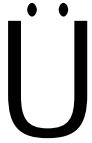
Dropout Rate

Garinger High School NSAs

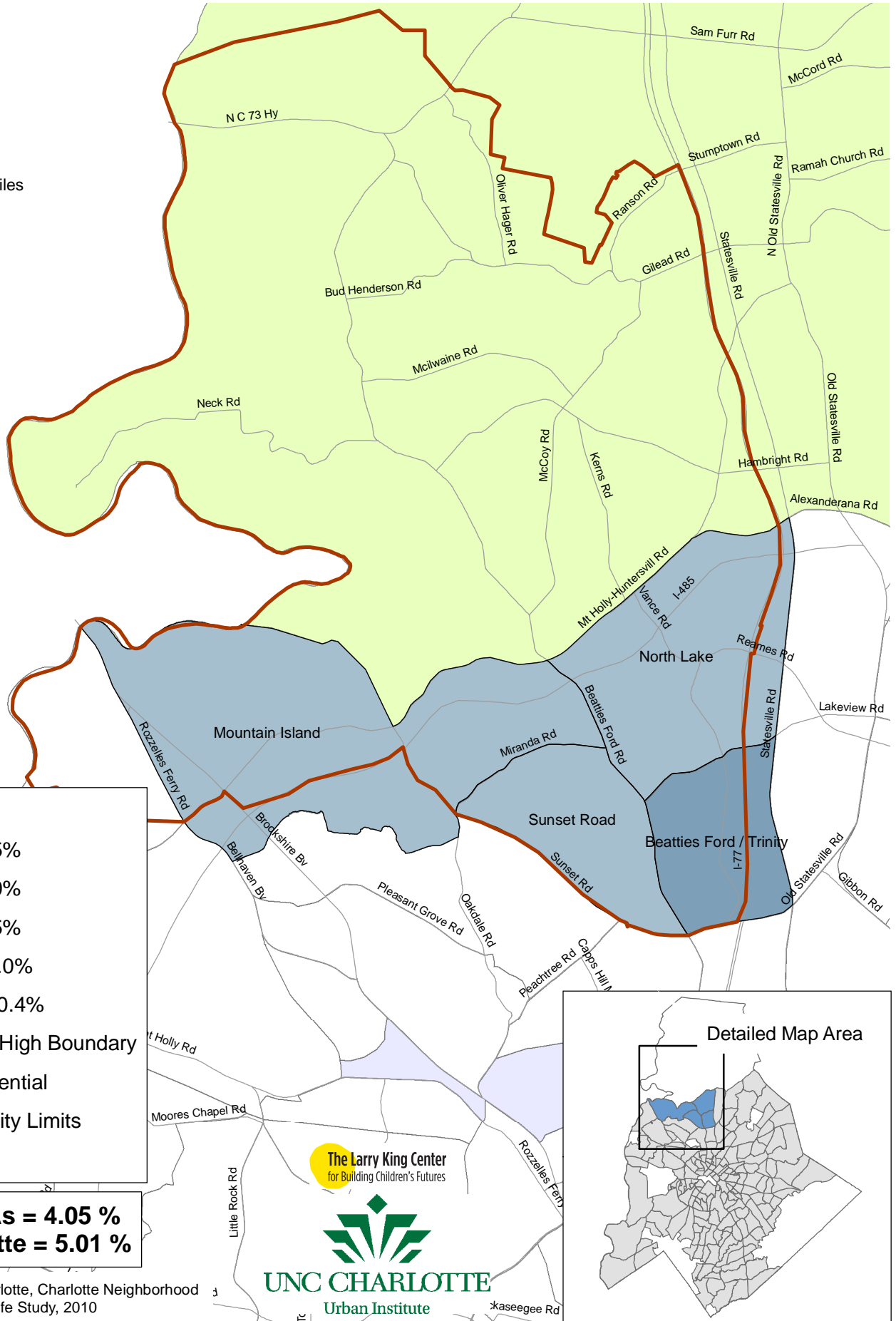


Dropout Rate

Hopewell High School NSAs



0 0.5 1 Miles

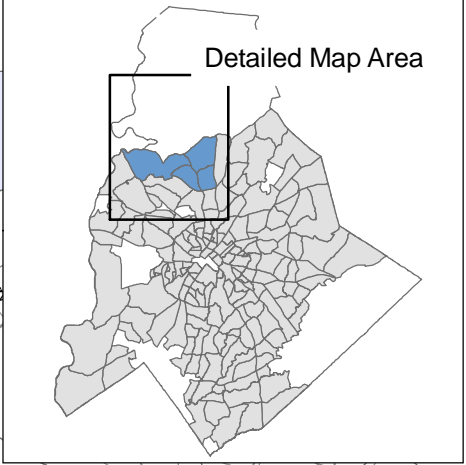


Dropout Rate

- 0.0% - 2.5%
- 2.6% - 5.0%
- 5.1% - 7.5%
- 7.6% - 10.0%
- 10.1% - 20.4%
- Hopewell High Boundary
- Non-residential
- Outside City Limits
- Roads

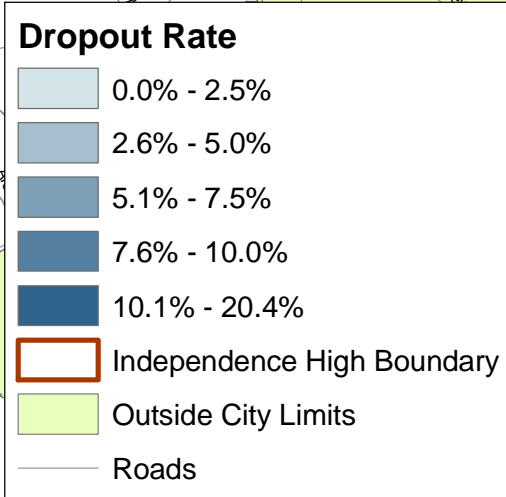
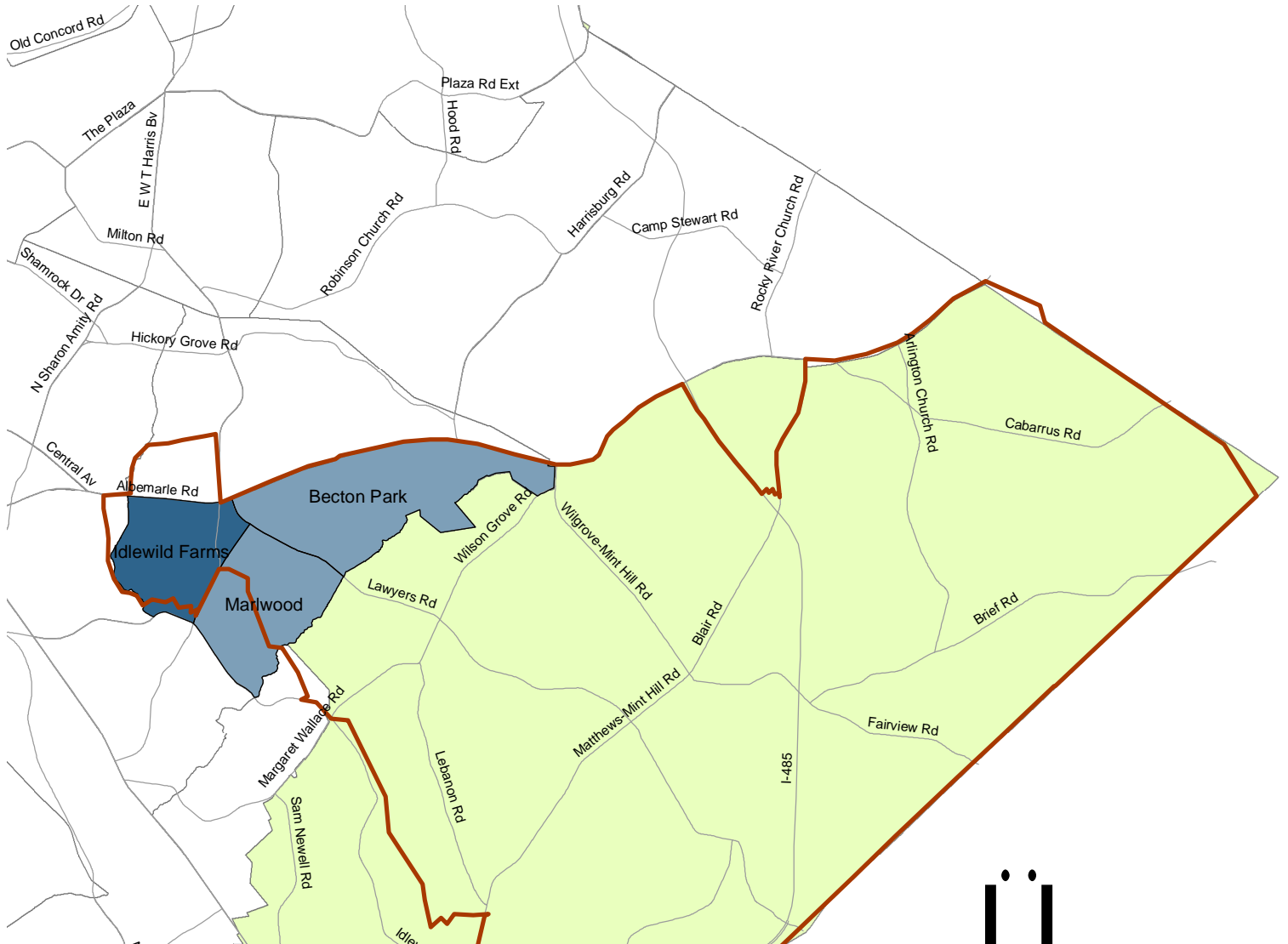
Hopewell NSAs = 4.05 %
City of Charlotte = 5.01 %

Data Source: City of Charlotte, Charlotte Neighborhood Quality of Life Study, 2010

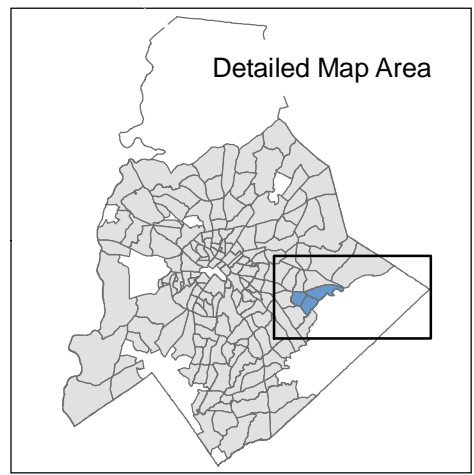
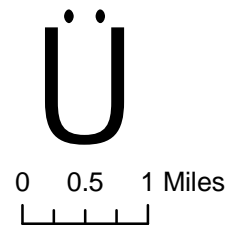


Dropout Rate

Independence High School NSAs



Independence NSAs = 7.42 %
City of Charlotte = 5.01 %

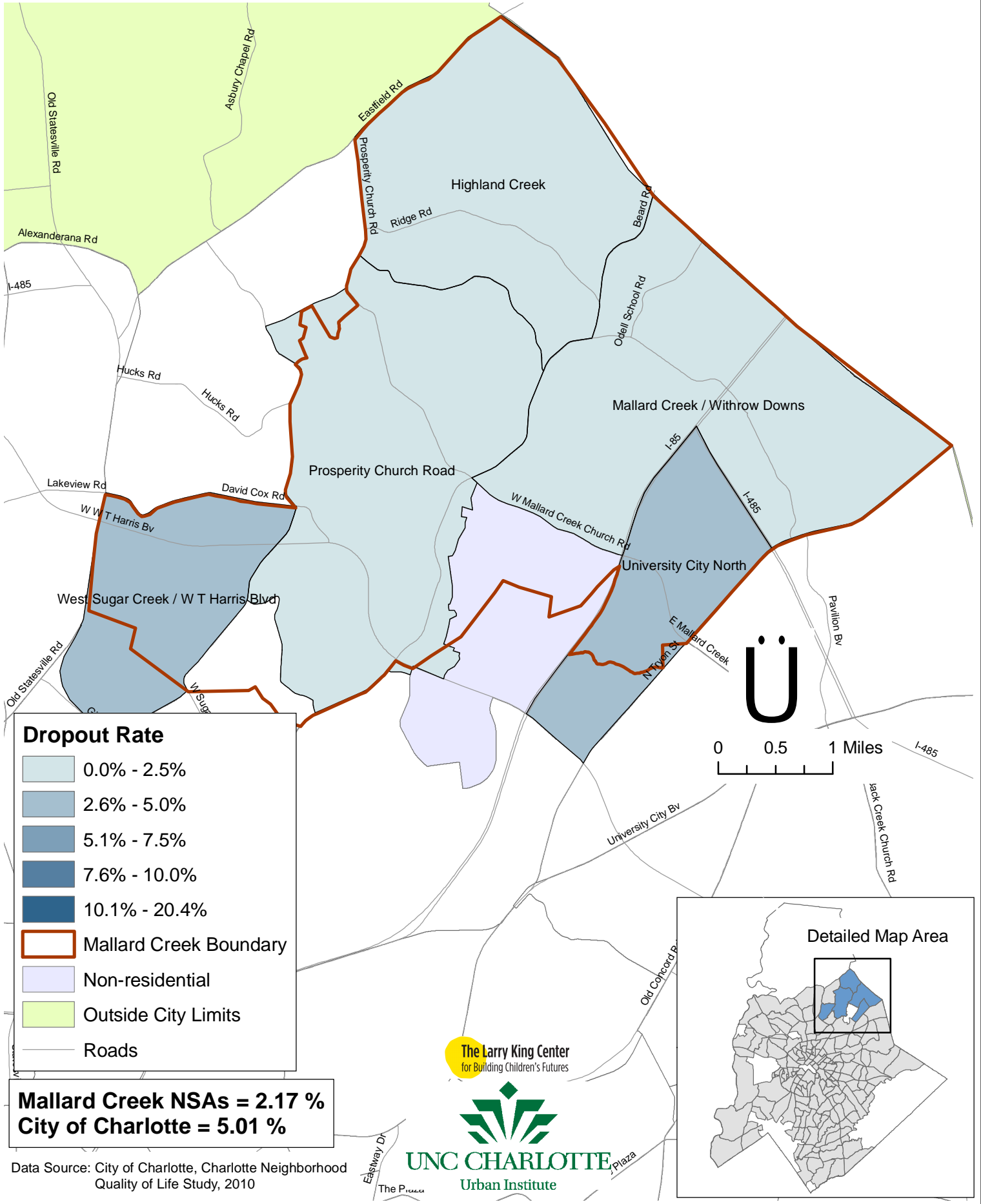


Data Source: City of Charlotte, Charlotte Neighborhood Quality of Life Study, 2010



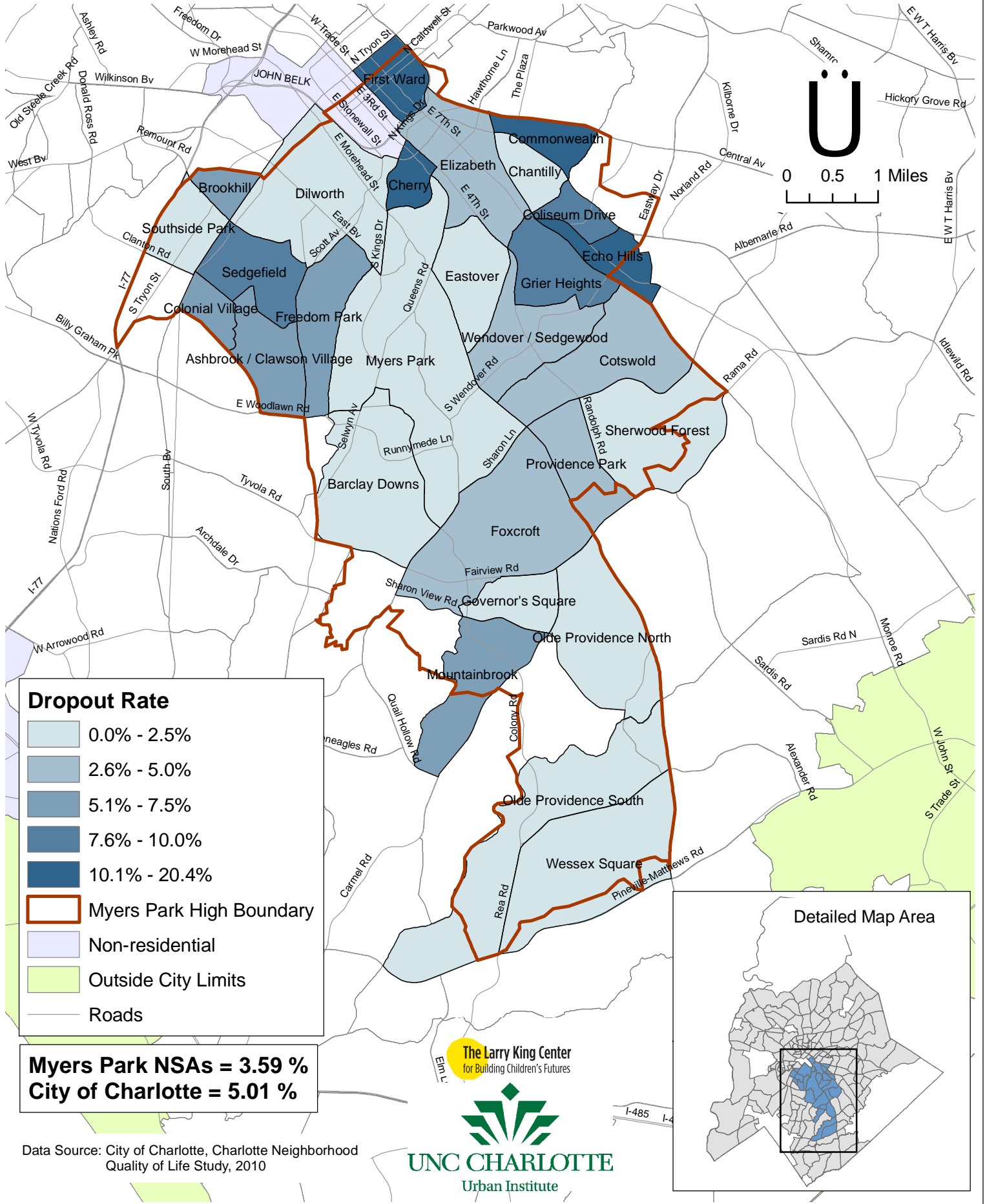
Dropout Rate

Mallard Creek High School NSAs



Dropout Rate

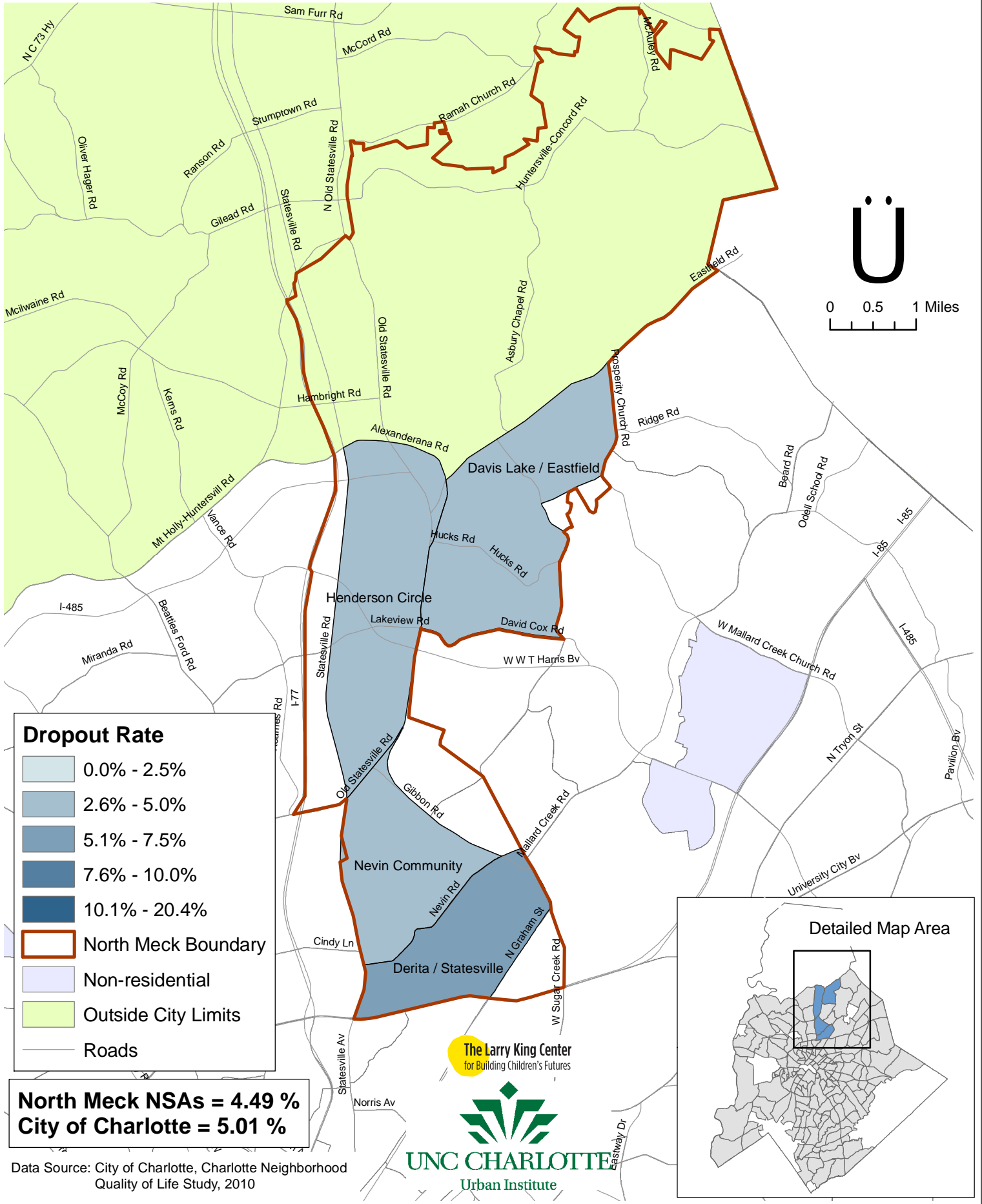
Myers Park High School NSAs



Data Source: City of Charlotte, Charlotte Neighborhood Quality of Life Study, 2010

Dropout Rate

North Mecklenburg High School NSAs



Data Source: City of Charlotte, Charlotte Neighborhood Quality of Life Study, 2010

Dropout Rate

Olympic High School NSAs

Dropout Rate

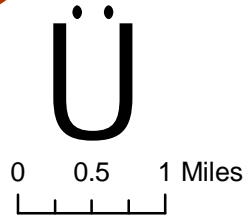
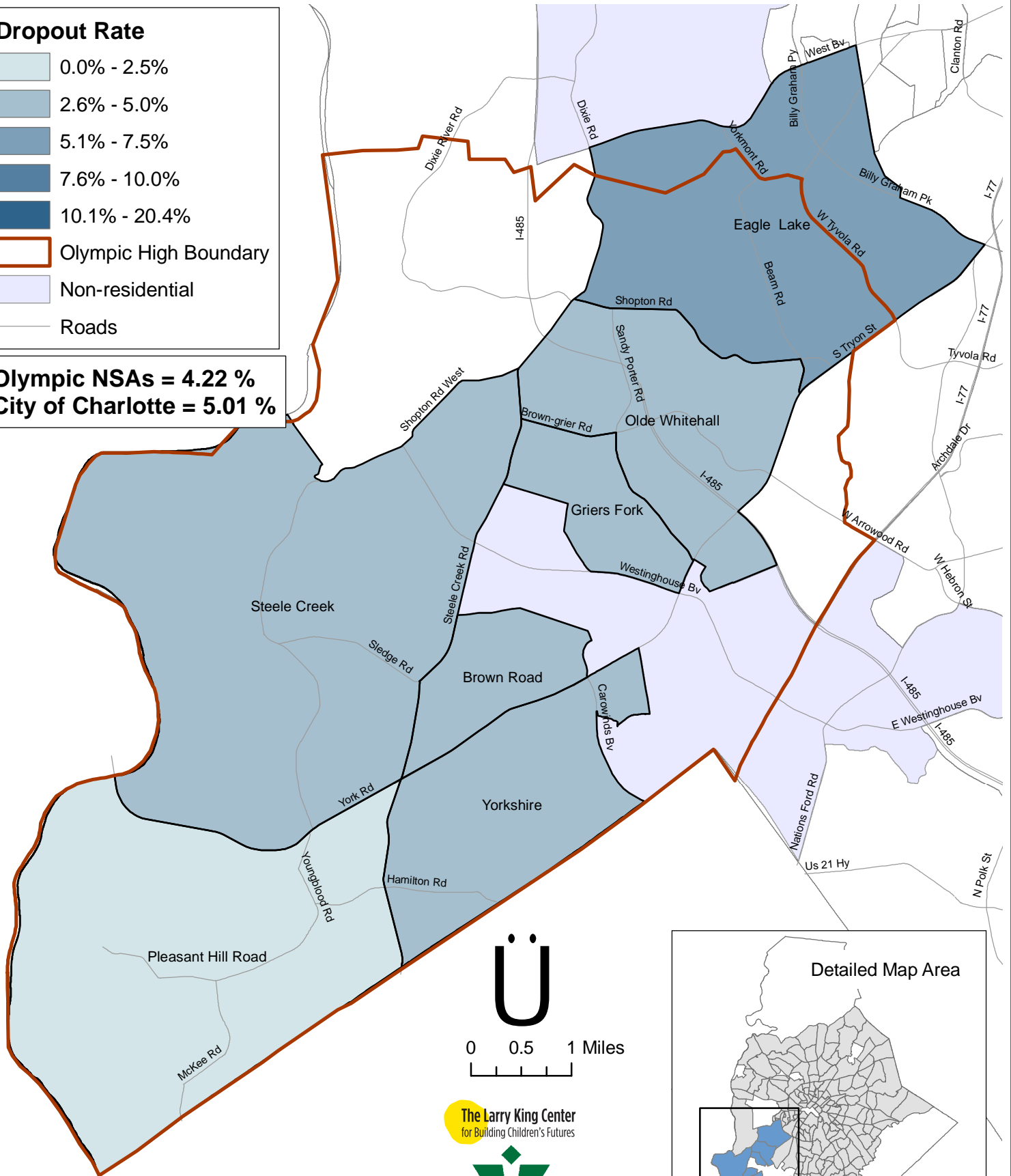
- 0.0% - 2.5%
- 2.6% - 5.0%
- 5.1% - 7.5%
- 7.6% - 10.0%
- 10.1% - 20.4%

Olympic High Boundary

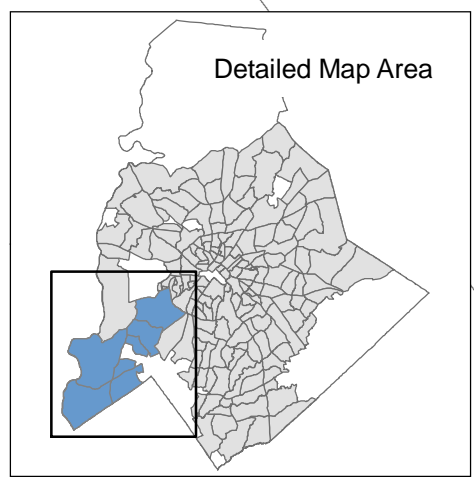
Non-residential

Roads

Olympic NSAs = 4.22 %
City of Charlotte = 5.01 %



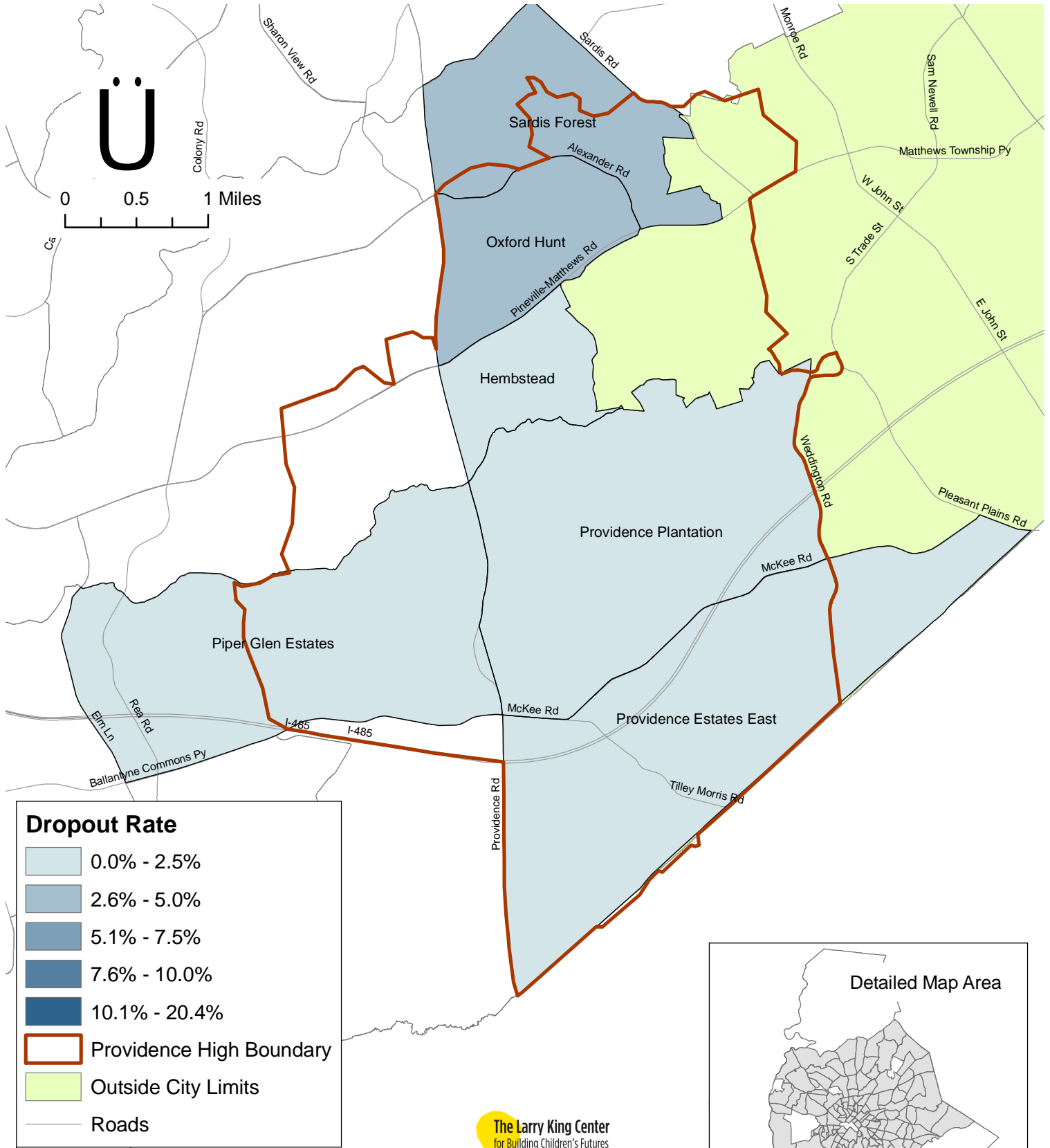
The Larry King Center
for Building Children's Futures



Data Source: City of Charlotte, Charlotte Neighborhood Quality of Life Study, 2010

Dropout Rate

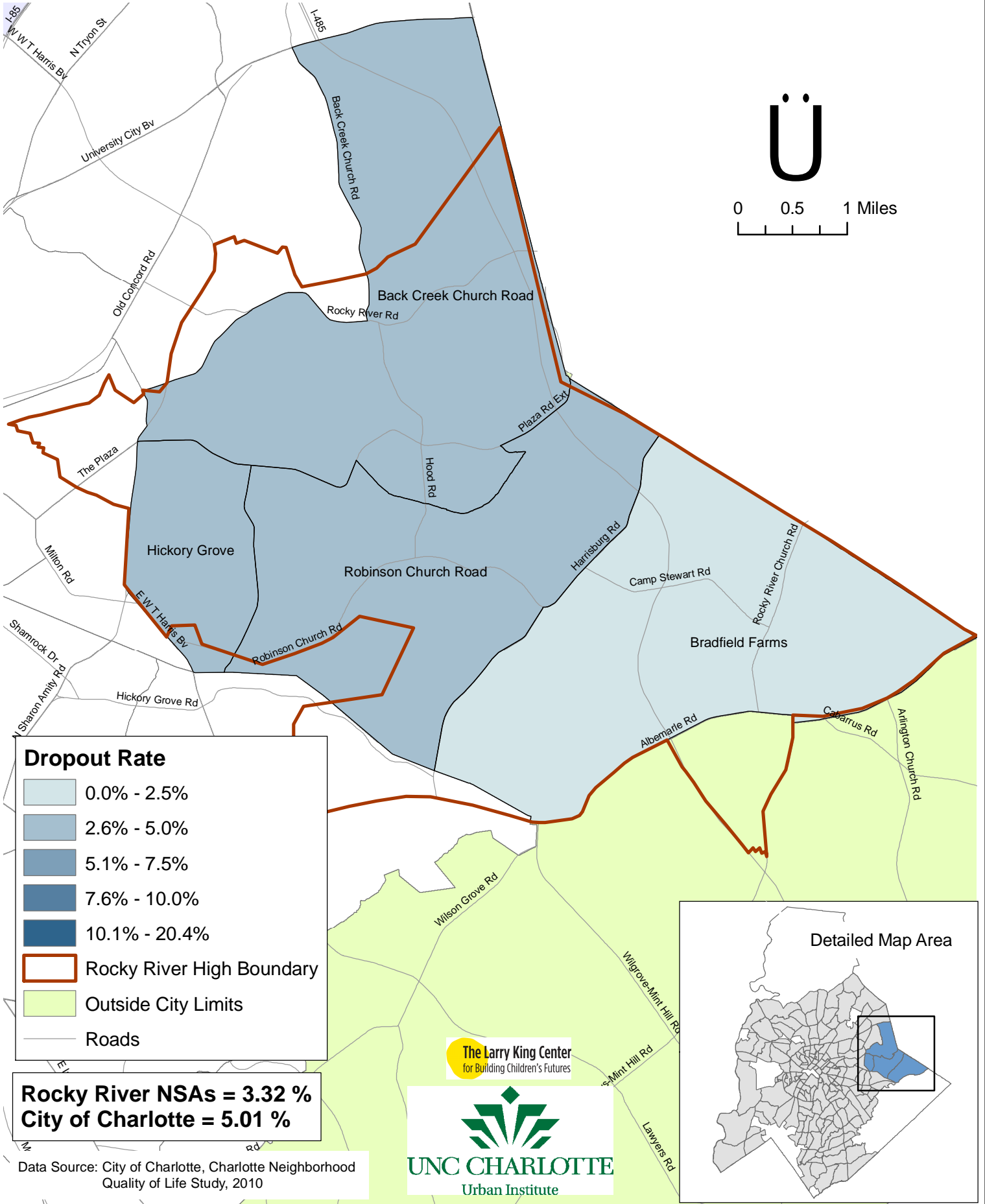
Providence High School NSAs



Data Source: City of Charlotte, Charlotte Neighborhood Quality of Life Study, 2010

Dropout Rate

Rocky River High School NSAs



Dropout Rate

- 0.0% - 2.5%
- 2.6% - 5.0%
- 5.1% - 7.5%
- 7.6% - 10.0%
- 10.1% - 20.4%

Rocky River High Boundary

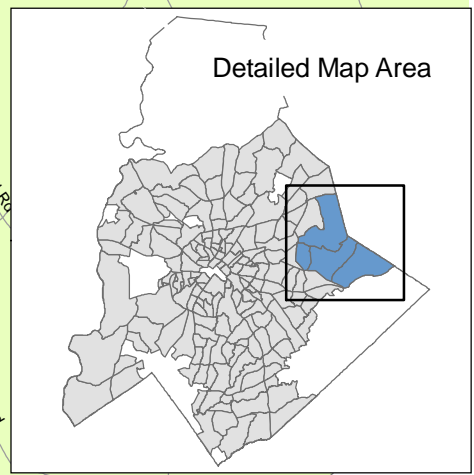
Outside City Limits

Roads

Rocky River NSAs = 3.32 %
City of Charlotte = 5.01 %

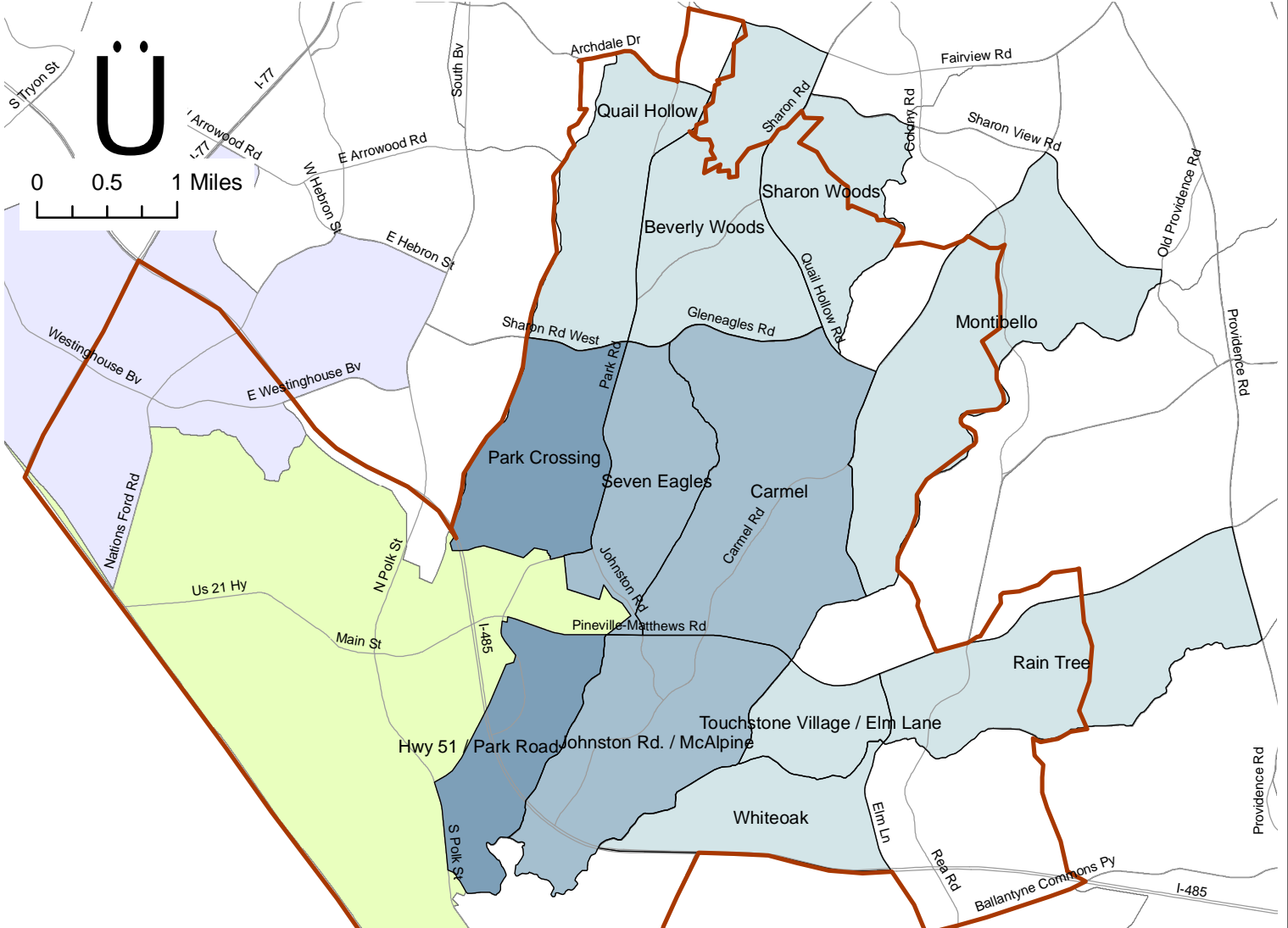
Data Source: City of Charlotte, Charlotte Neighborhood Quality of Life Study, 2010

The Larry King Center
for Building Children's Futures



Dropout Rate

South Mecklenburg High School NSAs



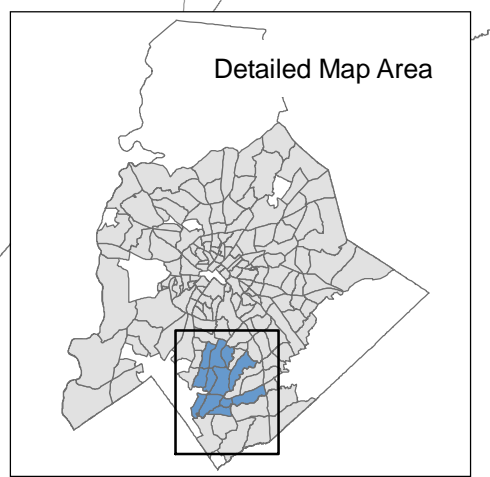
Dropout Rate

- 0.0% - 2.5%
- 2.6% - 5.0%
- 5.1% - 7.5%
- 7.6% - 10.0%
- 10.1% - 20.4%
- South Meck High Boundary
- Non-residential
- Outside City Limits
- Roads

South Mecklenburg NSAs = 2.68 %
City of Charlotte = 5.01 %

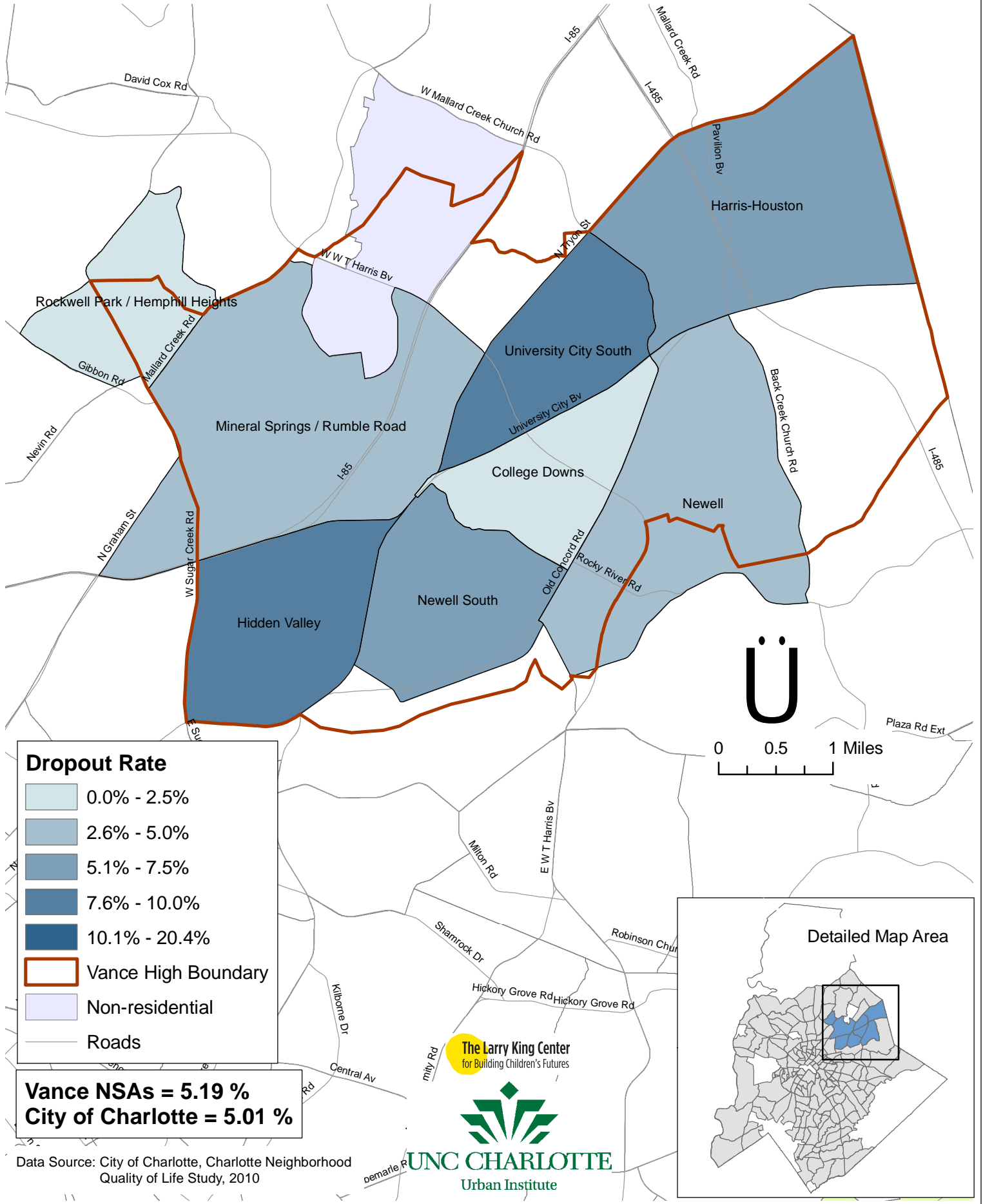
Data Source: City of Charlotte, Charlotte Neighborhood Quality of Life Study, 2010

The Larry King Center
for Building Children's Futures



Dropout Rate

Vance High School NSAs



Dropout Rate

- 0.0% - 2.5%
- 2.6% - 5.0%
- 5.1% - 7.5%
- 7.6% - 10.0%
- 10.1% - 20.4%

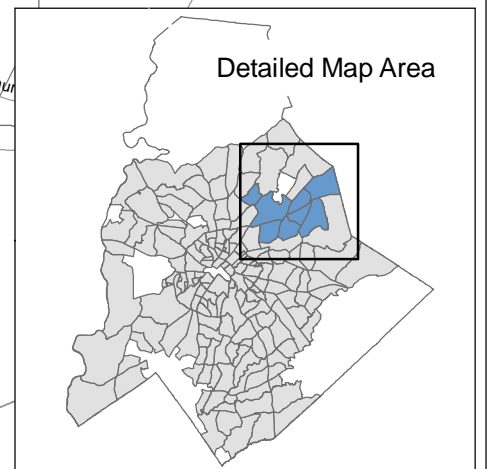
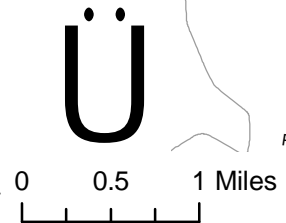
Vance High Boundary

Non-residential

Roads

Vance NSAs = 5.19 %
City of Charlotte = 5.01 %

Data Source: City of Charlotte, Charlotte Neighborhood Quality of Life Study, 2010



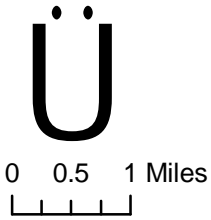
The Larry King Center
 for Building Children's Futures



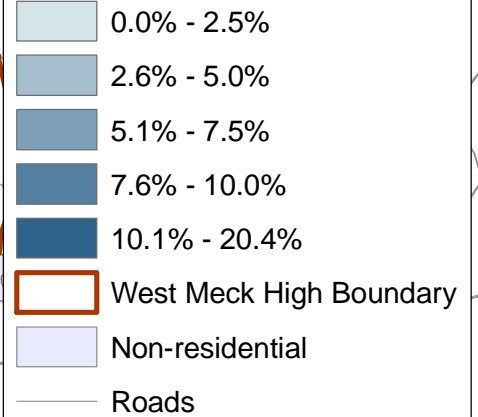
UNC CHARLOTTE
 Urban Institute

Dropout Rate

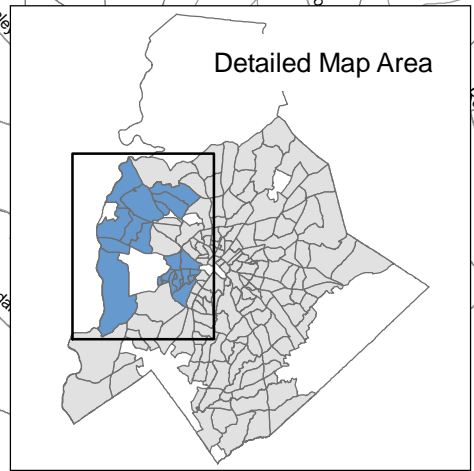
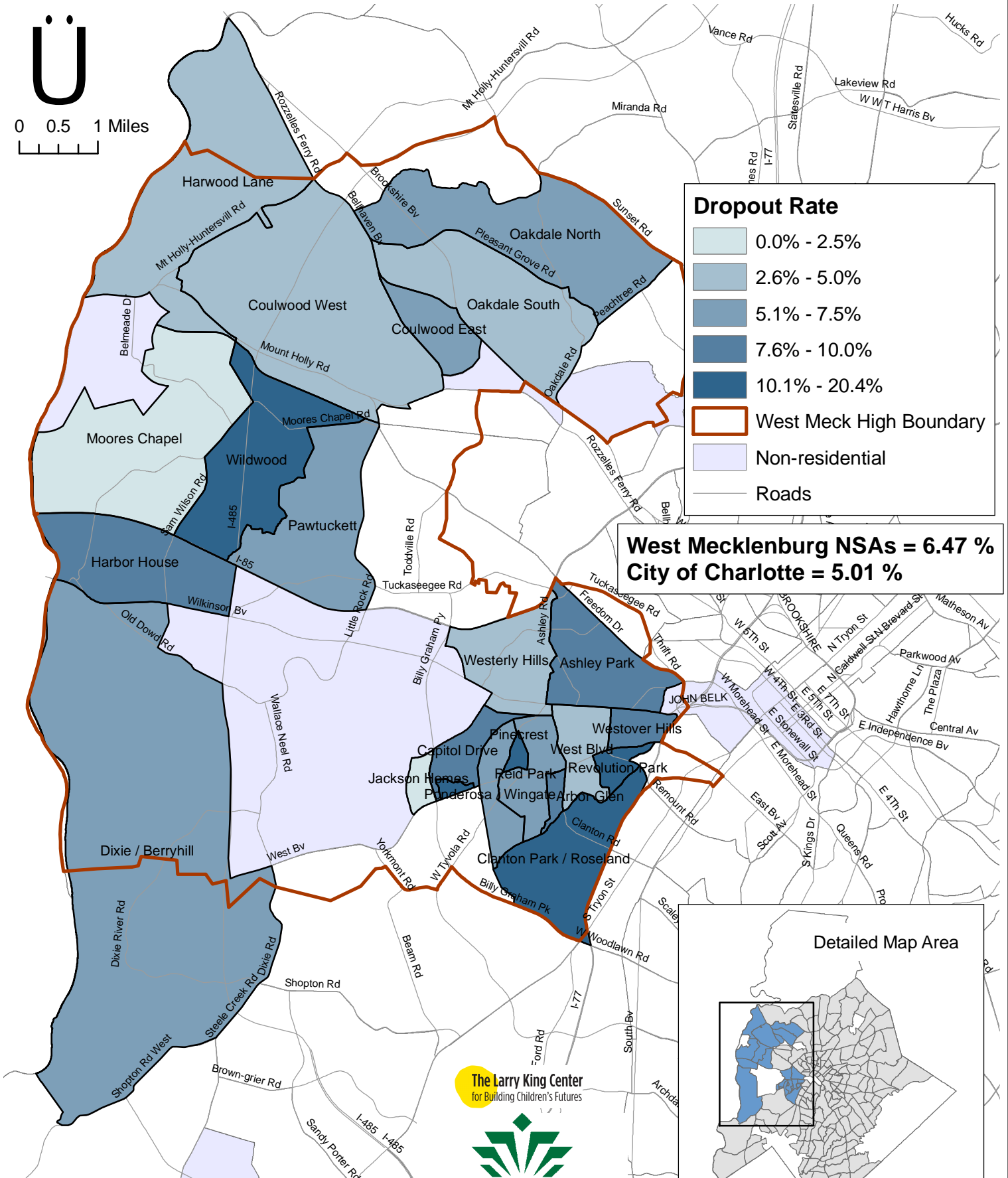
West Mecklenburg High School NSAs



Dropout Rate



West Mecklenburg NSAs = 6.47 %
City of Charlotte = 5.01 %

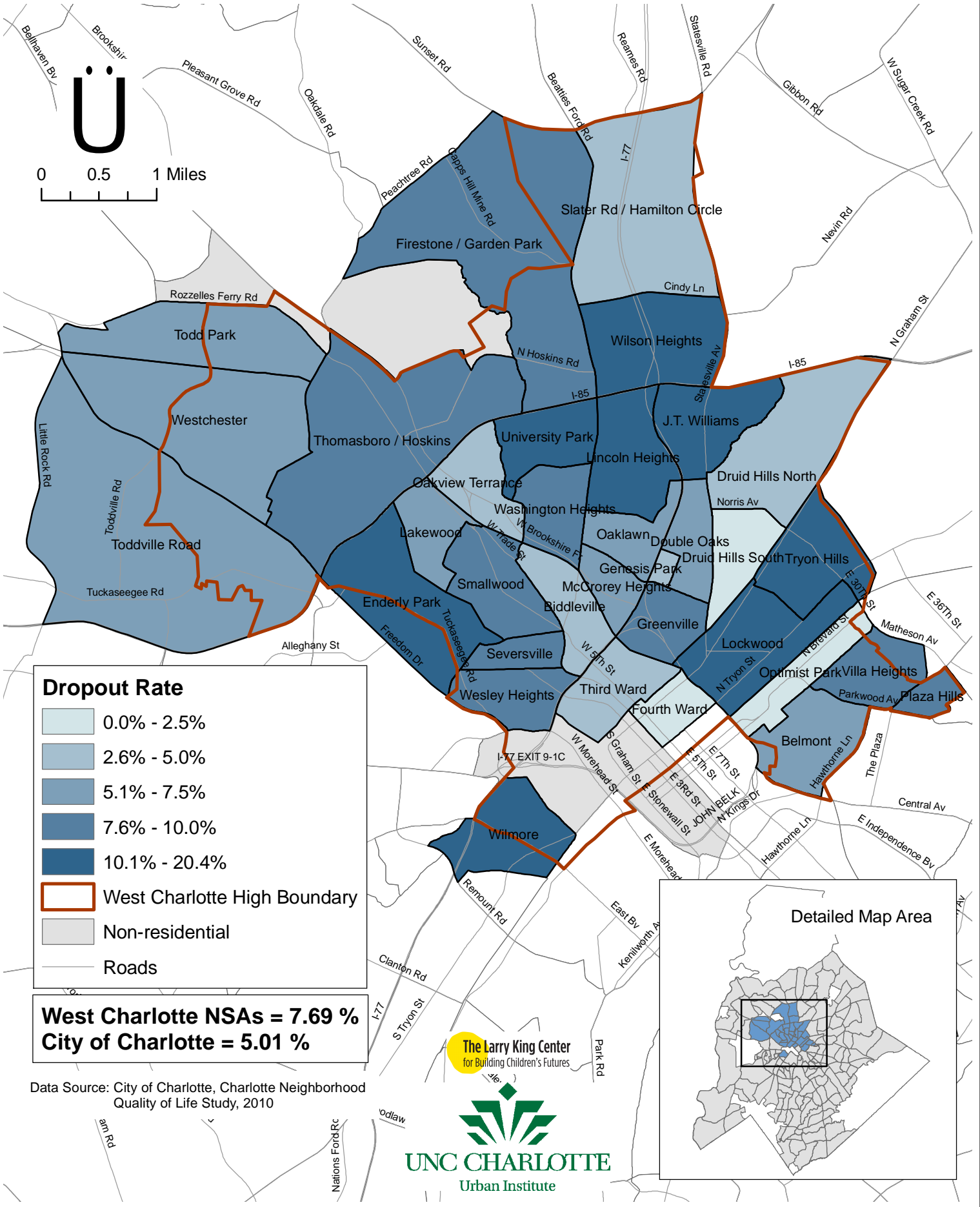


Data Source: City of Charlotte, Charlotte Neighborhood Quality of Life Study, 2010



Dropout Rate

West Charlotte High School NSAs



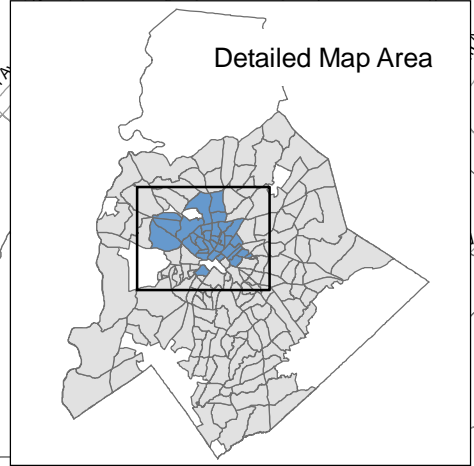
Dropout Rate

- 0.0% - 2.5%
- 2.6% - 5.0%
- 5.1% - 7.5%
- 7.6% - 10.0%
- 10.1% - 20.4%
- West Charlotte High Boundary
- Non-residential
- Roads

West Charlotte NSAs = 7.69 %
City of Charlotte = 5.01 %

Data Source: City of Charlotte, Charlotte Neighborhood Quality of Life Study, 2010

The Larry King Center
 for Building Children's Futures



NSA ID	NSA Name	Dropout Rate
--------	----------	--------------

Ardrey Kell High School NSAs

186	Ballantyne East	0.29
187	Ballantyne West	1.01
172	Providence Crossing	1.50
173	Provincetowne	1.64

Butler High School NSAs

157	Idlewild South	5.79
156	Marshbrooke	3.86

E.E. Waddell High School NSAs

70	Collingwood	5.26
197	Madison Park	12.50
196	Montclair / Madison Park	12.28
198	Montclair South	10.24
195	Starmount	9.28
193	Starmount Forest	7.73
192	Sterling	6.36
6	York Road	12.12
199	Yorkmount	7.75

East Mecklenbug High School NSAs

158	East Forest	9.59
163	Lansdowne	4.26
152	North Sharon Amity / Reddman Road	8.42
58	Oakhurst	5.66
161	Sardis Woods	5.45
160	Stonehaven	4.55

Garinger High School NSAs

55	Briarcreek-Woodland	12.40
49	Country Club Heights	6.17
149	Eastland / Wilora Lake	8.25
151	Eastway / Sheffield Park	5.81
148	Farm Pond	7.62
141	Hampshire Hills	6.53
147	Hickory Ridge	8.92
44	North Charlotte	6.06
143	Oak Forest	6.69
50	Plaza Midwood	2.08
48	Plaza-Shamrock	6.06
142	Shannon Park	9.29
40	Sugaw Creek / Ritch Ave	4.88
150	Windsor Park	6.44

NSA ID	NSA Name	Dropout Rate
--------	----------	--------------

Hopewell High School NSAs

123	Beatties Ford / Trinity	6.28
117	Mountain Island	2.97
122	North Lake	3.86
121	Sunset Road	4.21

Independence High School NSAs

154	Becton Park	6.14
153	Idlewild Farms	10.04
155	Marlwood	6.51

Mallard Creek High School NSAs

130	Highland Creek	1.75
131	Mallard Creek / Withrow Downs	1.94
129	Prosperity Church Road	2.02
132	University City North	3.64
128	West Sugar Creek / W T Harris Blvd	3.06

Myers Park High School NSAs

69	Ashbrook / Clawson Village	7.41
181	Barclay Downs	0.00
14	Brookhill	5.71
53	Chantilly	0.00
64	Cherry	10.34
56	Coliseum Drive	9.09
71	Colonial Village	6.25
52	Commonwealth	11.11
61	Cotswold	4.69
66	Dilworth	1.94
62	Eastover	0.00
57	Echo Hills	13.64
54	Elizabeth	3.57
67	First Ward	11.11
165	Foxcroft	3.17
65	Freedom Park	6.98
166	Governor's Square	1.75
59	Grier Heights	10.00
179	Mountainbrook	7.25
63	Myers Park	0.82
167	Olde Providence North	1.80
177	Olde Providence South	1.05
164	Providence Park	3.51
68	Sedgefield	8.57
159	Sherwood Forest	0.85
72	Southside Park	2.08
60	Wendover / Sedgewood	3.13
176	Wessex Square	1.82

NSA ID	NSA Name	Dropout Rate
--------	----------	--------------

North Mecklenburg High School NSAs

127	Davis Lake / Eastfield	4.05
41	Derita / Statesville	6.35
126	Henderson Circle	3.90
125	Nevin Community	3.08

Olympic High School NSAs

103	Brown Road	2.82
100	Eagle Lake	6.76
102	Griers Fork	4.98
101	Olde Whitehall	4.40
105	Pleasant Hill Road	0.86
106	Steele Creek	4.80
104	Yorkshire	3.83

Providence High School NSAs

169	Hembstead	0.00
168	Oxford Hunt	2.71
174	Piper Glen Estates	2.12
171	Providence Estates East	0.39
170	Providence Plantation	0.75
162	Sardis Forest	3.50

Rocky River High School NSAs

136	Back Creek Church Road	2.91
146	Bradfield Farms	2.43
144	Hickory Grove	4.98
145	Robinson Church Road	3.88

South Mecklenburg High School NSAs

182	Beverly Woods	0.98
183	Carmel	2.79
189	Hwy 51 / Park Road	6.30
188	Johnston Rd. / McAlpine	3.21
178	Montibello	1.31
191	Park Crossing	6.86
194	Quail Hollow	0.00
175	Rain Tree	2.22
190	Seven Eagles	2.92
180	Sharon Woods	0.83
184	Touchstone Village / Elm Lane	1.89
185	Whiteoak	1.56

NSA ID	NSA Name	Dropout Rate
--------	----------	--------------

Vance High School NSAs

138	College Downs	2.23
135	Harris-Houston	5.70
140	Hidden Valley	9.62
133	Mineral Springs / Rumble Road	2.99
137	Newell	3.47
139	Newell South	5.29
42	Rockwell Park / Hemphill Heights	1.60
134	University City South	10.00

West Charlotte High School NSAs

51	Belmont	6.90
26	Biddleville	4.55
34	Double Oaks	6.67
38	Druid Hills North	4.55
37	Druid Hills South	2.17
18	Enderly Park	11.93
120	Firestone / Garden Park	8.71
32	Fourth Ward	0.00
33	Genesis Park	3.45
31	Greenville	8.33
39	J.T. Williams	18.75
21	Lakewood	6.67
29	Lincoln Heights	11.54
35	Lockwood	18.42
27	McCrorey Heights	7.14
28	Oaklawn	5.26
22	Oakview Terrance	2.60
45	Optimist Park	0.00
47	Plaza Hills	8.33
24	Seversville	9.68
124	Slater Rd / Hamilton Circle	3.35
25	Smallwood	8.70
30	Third Ward	3.03
19	Thomasboro / Hoskins	8.27
17	Todd Park	5.19
112	Toddville Road	6.41
36	Tryon Hills	13.10
43	University Park	10.45
46	Villa Heights	10.00
23	Washington Heights	9.38
20	Wesley Heights	9.09
113	Westchester	7.05
15	Wilmore	14.04
5	Wilson Heights	16.67

NSA ID	NSA Name	Dropout Rate
--------	----------	--------------

West Mecklenburg High School NSAs

73	Arbor Glen	8.93
13	Ashley Park	9.86
10	Boulevard Homes	14.29
4	Capitol Drive	9.26
1	Clanton Park / Roseland	12.41
114	Coulwood East	7.41
115	Coulwood West	3.50
107	Dixie / Berryhill	5.11
108	Harbor House	8.33
116	Harwood Lane	4.52
3	Jackson Homes	0.00
109	Moores Chapel	1.59
118	Oakdale North	6.98
119	Oakdale South	3.80
111	Pawtucket	5.88
2	Pinecrest	11.76
9	Ponderosa / Wingate	7.04
7	Reid Park	5.71
16	Revolution Park	20.41
8	West Blvd	2.94
12	Westerly Hills	4.32
11	Westover Hills	9.09
110	Wildwood	10.14